

The appliance of composite science to underground access covering

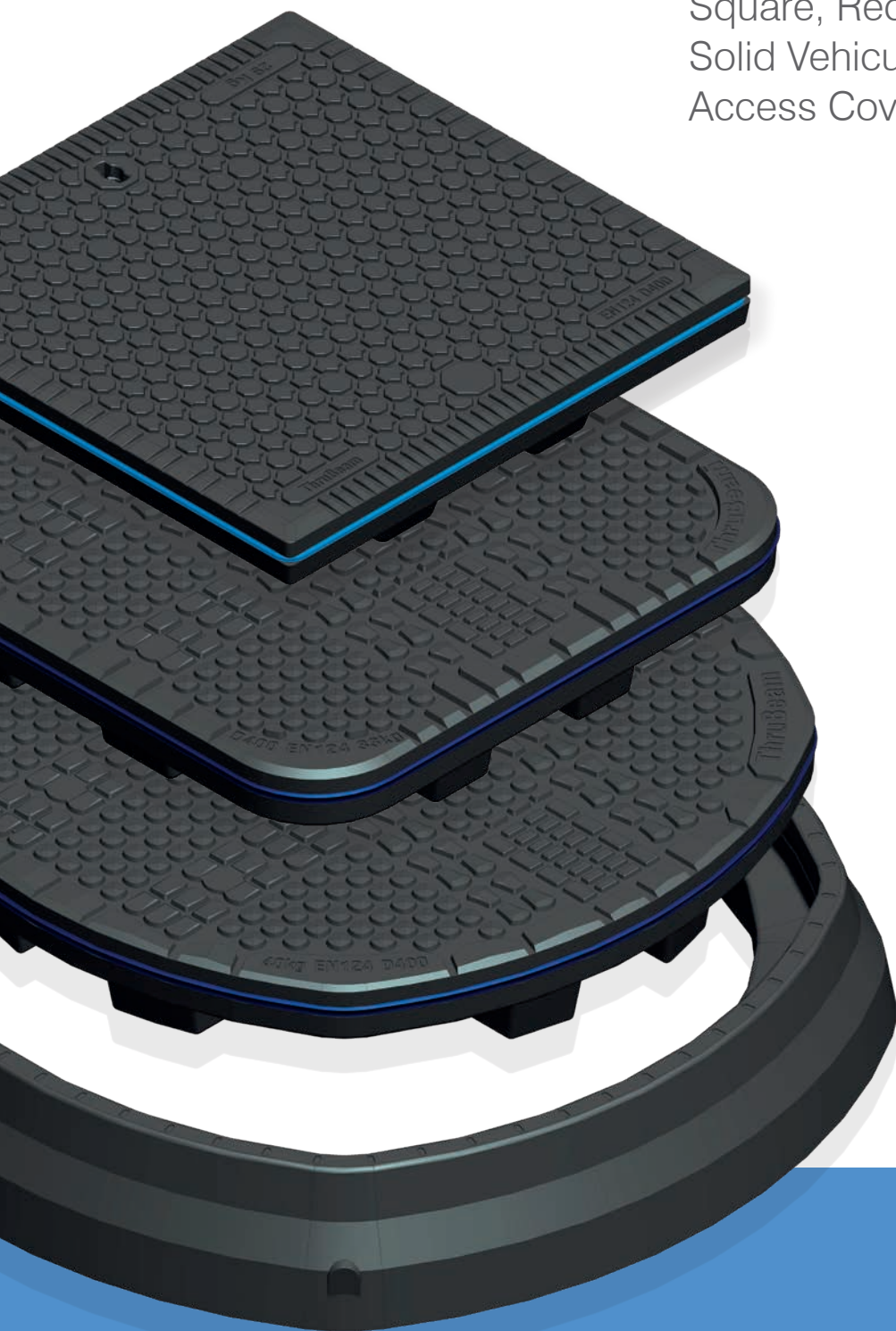
ThruBeam[®]

C O V E R S

D400 Range

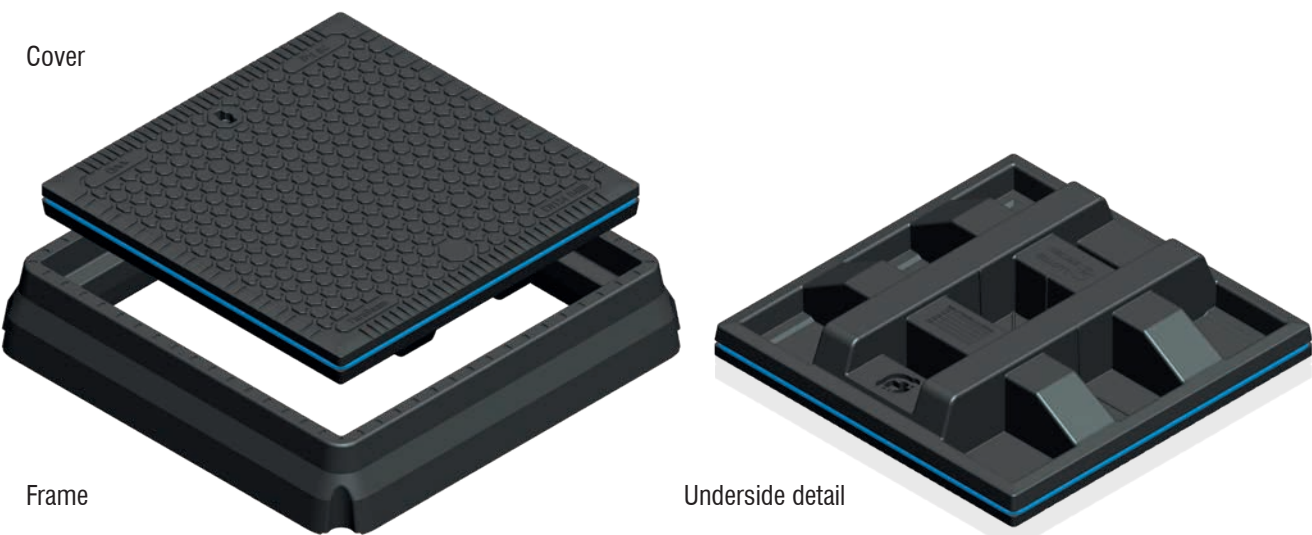
**DS6, DM6, DM9, DR60,
DR76 and DR90**

Square, Rectangular and Round
Solid Vehicular Composite
Access Covers

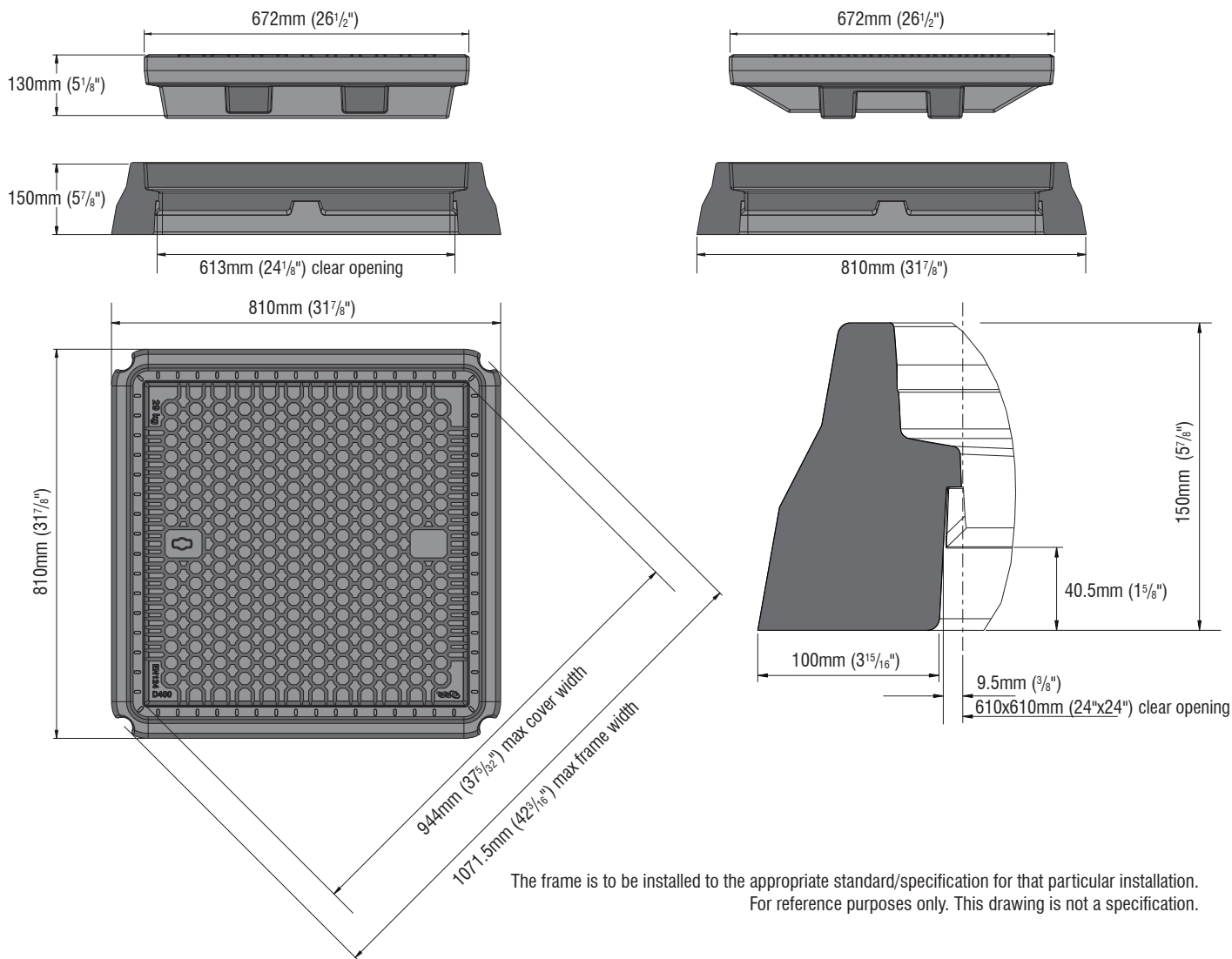


EN124:2015 Class D400 Vehicular Composite Access Covers

DS6 600x600mm - Solid
Square Vehicular Composite Access Cover



Dimensions



Technical Specification

EN124:2015 Class D400

DS6 600x600mm Square

Vehicular Composite Access Cover

Cover Specification

EN124:2015 Class D400

610 x 610mm (23" x 24")

672 x 672 x 132mm (26 1/2" x 26 1/2" x 5 1/4")

PSRV 60

Weight: 29kg (63.8lb) Combined weight with frame 44kg (96.8lb)

Lifting points: Single key housing

Tread depth: Tread depth complies with EN124:2015

Tread type: Embedded aggregate – uni-directional

Markings: Week, year and location of manufacture on the underside of cover.

Cover class and weight on the top surface.

Corrosion/Chemical resistance: All component parts are resistant to chemical attack, diesel, petrol, salt and water or a combination of the above over the lifespan of the cover. Surface discolouration is acceptable in service.

Combustion properties: All component parts do not support combustion.

Products of combustion do not contain harmful chemicals (e.g. bromides)

Sealed: Yes (optional - can be retro-fitted)

Carbon footprint: Low

Material: Advanced fibre glass composite

Client logo: Can be provided on top surface

Security Features: Lock and security plug (lock cannot be left open on replacement of cover)

Frame Specification

EN124:2015 Class D400

610 x 610mm (23" x 24")

Weight: 15kg (33lb)

External Dimensions: 810 x 810 x 150mm (31 7/8" x 31 7/8" x 5 7/8")

Material: Advanced fibre glass composite

Installation Details: Provided in full as a separate document

Rectangular Vehicular Composite Access Cover



Frame

Underside detail

Technical drawing of the 600x700mm frame, showing dimensions in millimeters (mm) and inches (in).

Top View Dimensions:

- Overall Width: 768mm (30 1/4")
- Overall Height: 132.5mm (5 1/32")
- Inner Width: 700mm (27 9/16")
- Inner Height: 150mm (5 7/8")

Side View Dimensions:

- Overall Width: 668mm (26 5/16")
- Overall Height: 600mm (23 5/8")

Front View Dimensions:

- Overall Width: 900mm (35 1/2")
- Overall Height: 800mm (31 1/2")
- Inner Width: 935mm (36 3/16") Maximum Cover Width
- Inner Height: 1067mm (42") Maximum Frame Width

Detail View Dimensions:

- Height: 150mm (5 7/8")
- Width: 100mm (3 15/16")
- Clearance: 40.5mm (1 5/8")
- Opening Size: 9.5mm (3/8")
- Clear Opening: 600x700mm (23 5/8" x 27 9/16")

The frame is to be installed to the appropriate standard/specification for that particular installation. For reference purposes only. This drawing is not a specification.

The frame is to be installed to the appropriate standard/specification for that particular installation.
For reference purposes only. This drawing is not a specification.



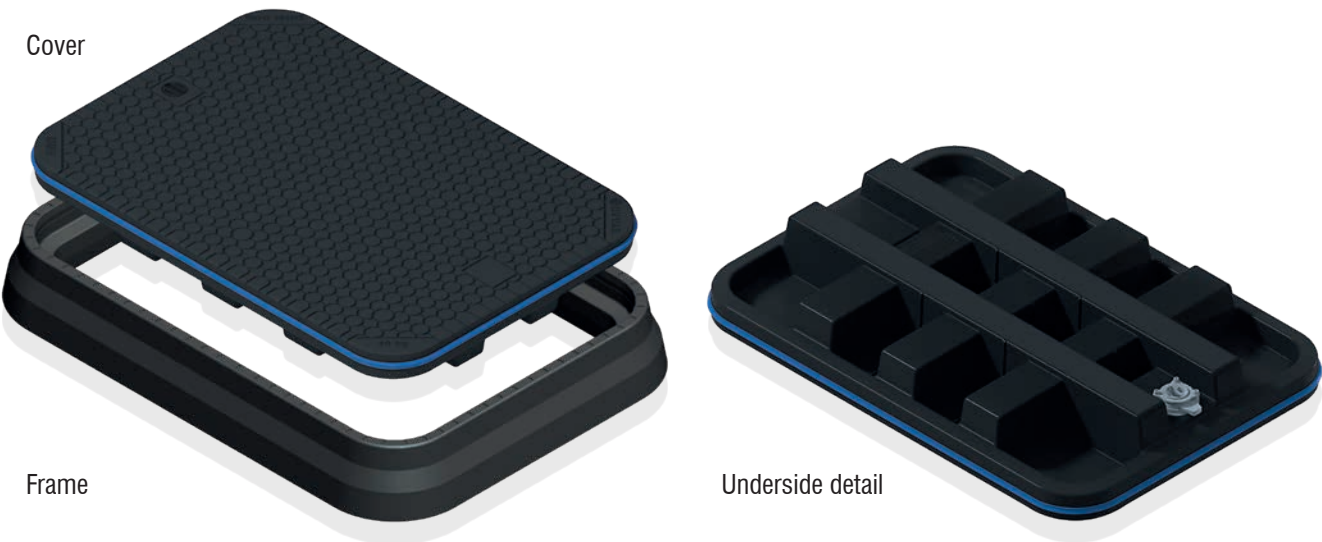
DM6 600x700mm Rectangular

Vehicular Composite Access Cover

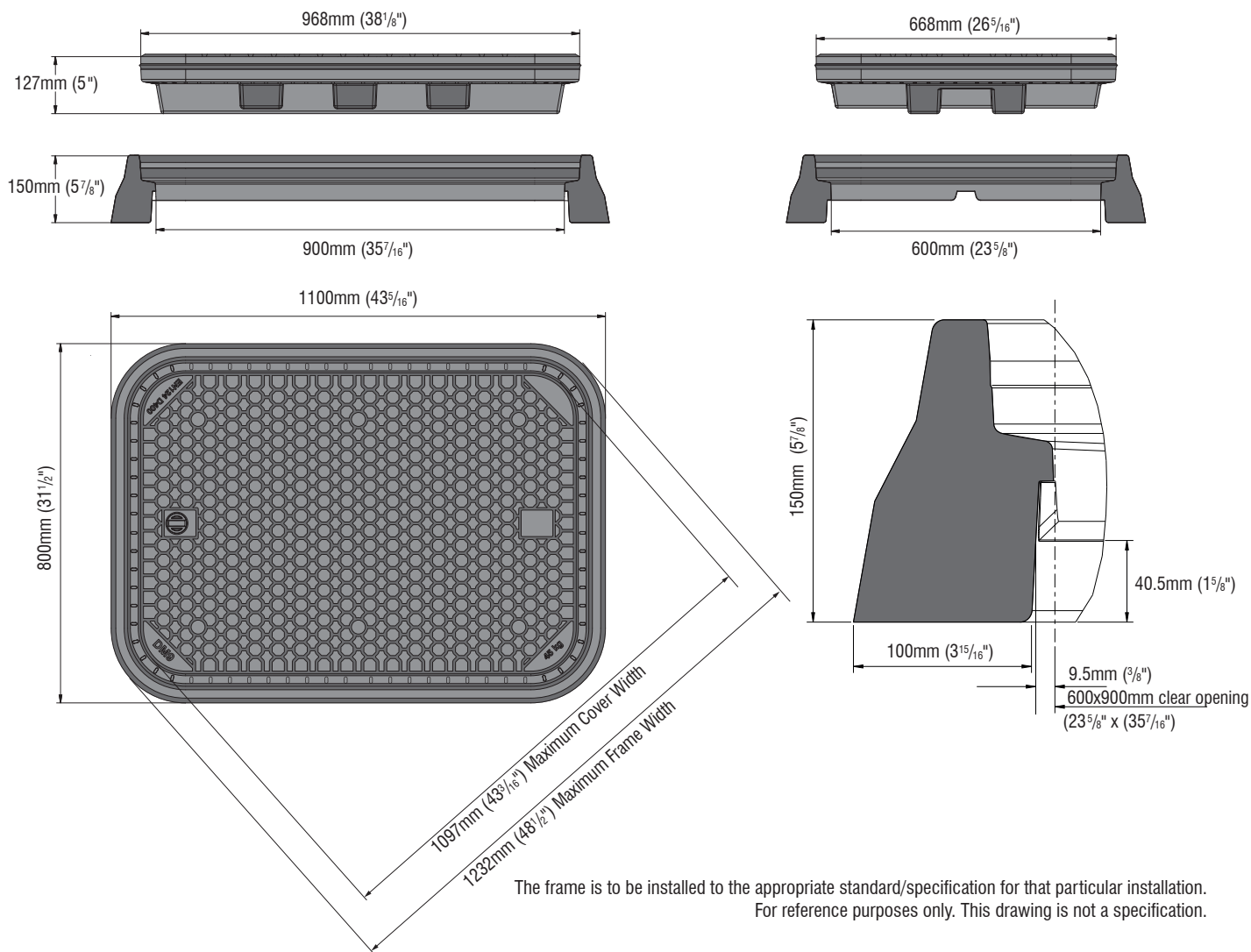
Load Rating:	EN124:2015 Class D400
Clear Opening:	600 x 700mm (23 ⁵ / ₈ " x 27 ⁹ / ₁₆ ")
External Dimensions:	668 x 768mm x 127mm (26 ⁵ / ₁₆ " x 30 ¹ / ₄ " x 5")
Skid Resistance (wet polishes)	PSRV 60
Weight:	33kg (72.75lb) Combined weight with frame 48.5kg (106.955lb)
Lifting points:	Single key housing
Tread depth:	Tread depth complies with EN124:2015
Tread type:	Embedded aggregate – uni-directional
Markings:	Week, year and location of manufacture on the underside of cover. Cover class and weight on the top surface.
Corrosion/Chemical resistance:	All component parts are resistant to chemical attack, diesel, petrol, salt and water or a combination of the above over the lifespan of the cover. Surface discolouration is acceptable in service.
Combustion properties:	All component parts do not support combustion. Products of combustion do not contain harmful chemicals (e.g. bromides)
Sealed:	Yes (optional - can be retro-fitted)
Carbon footprint:	Low
Material:	Advanced fibre glass composite
Client logo:	Can be provided on top surface
Security Features:	Lock and security plug (lock cannot be left open on replacement of cover)

Load Rating:	EN124:2015 Class D400
Clear Opening:	DM6 - 600 x 700mm (23 ⁵ / ₈ " x 27 ⁹ / ₁₆ ")
Weight:	DM6 - 15.5kg (34.2lb)
External Dimensions:	DM6 - 800 x 900mm x 150mm (31 ¹ / ₂ " x 35 ¹ / ₂ " x 5 ⁷ / ₈ ")
Material:	Advanced fibre glass composite
Installation Details:	Provided in full as a separate document

DM9 600x900mm - Solid
Rectangular Vehicular Composite Access Cover



Dimensions



Technical Specification

EN124:2015 Class D400

DM9 600x900mm Rectangular
Vehicular Composite Access Cover

Cover Specification

EN124:2015 Class D400

600 x 900mm (23 5/8" x 35 7/16")

668 x 968mm x 127mm (26 5/16" x 38 1/8" x 5")

PSRV 60

45kg (99.2lb) Combined weight with frame 60.5kg (133.4lb)

Single key housing

Tread depth complies with EN124:2015

Embedded aggregate – uni-directional

Month, year and location of manufacture on the underside of cover.

Cover class and weight on the top surface.

All component parts are resistant to chemical attack, diesel, petrol, salt and water or a combination of the above over the lifespan of the cover. Surface discolouration is acceptable in service.

All component parts do not support combustion.

Products of combustion do not contain harmful chemicals (e.g. bromides)

Yes (optional - can be retro-fitted)

Low

Advanced fibre glass composite

Can be provided on top surface

Lock and security plug (lock cannot be left open on replacement of cover)

Frame Specification

EN124:2015 Class D400

DM9 - 600 x 900mm (23 5/8" x 35 7/16")

DM9 - 15.5kg (34.2lb)

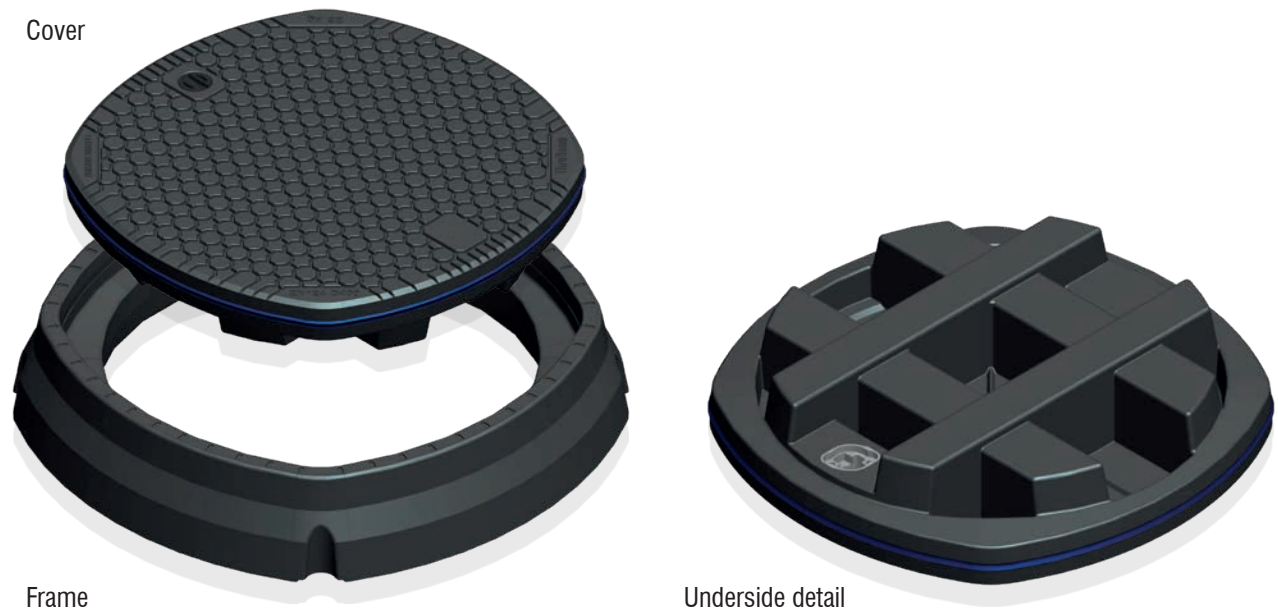
DM9 - 800 x 1100mm x 150mm (31 1/2" x 43 5/16" x 5 7/8")

Advanced fibre glass composite

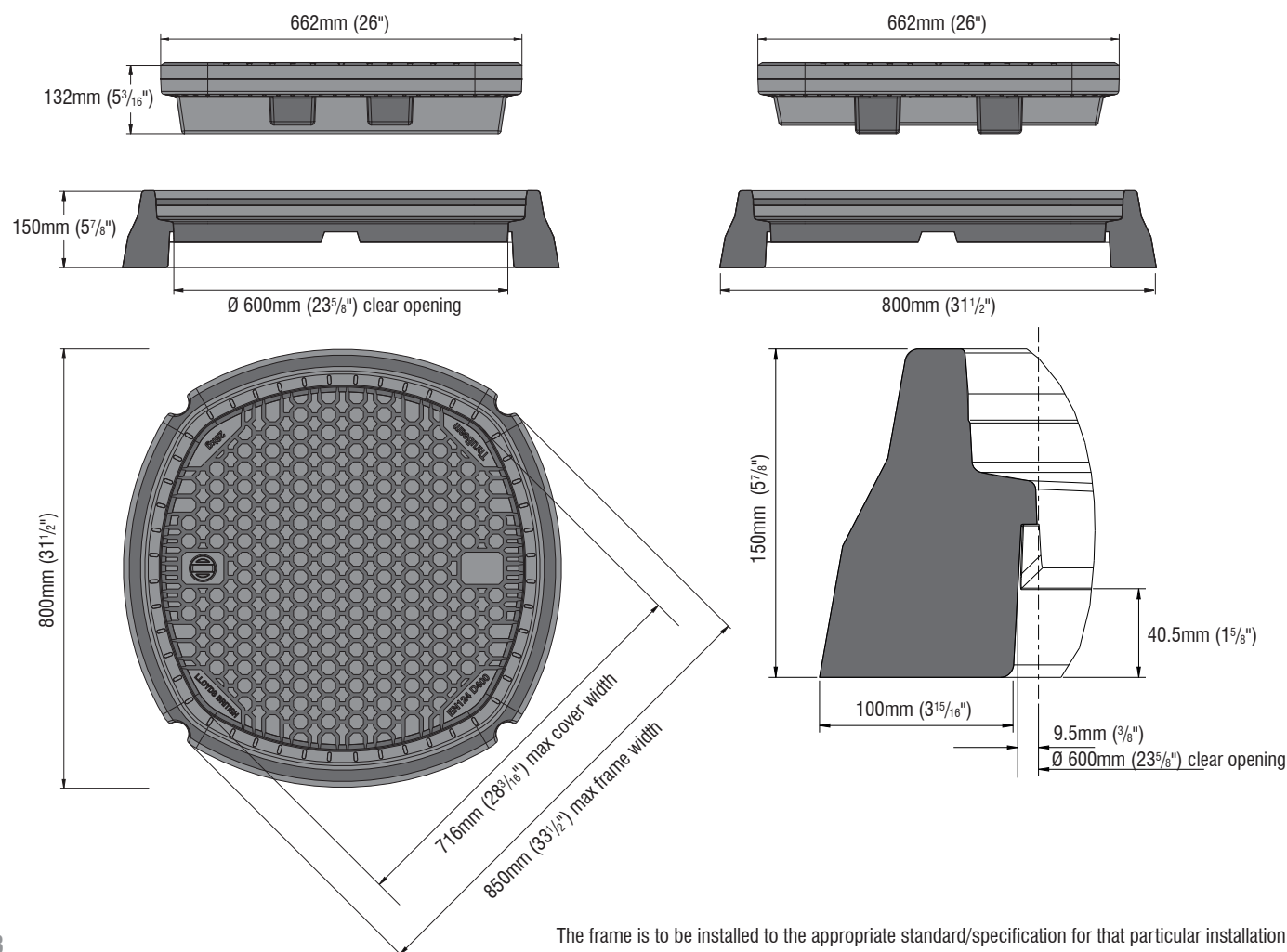
Provided in full as a separate document

Designs and specifications are subject to alteration, so that continuous improvement can be undertaken.

DR60 600mm - Solid
Round Vehicular Composite Access Cover



Dimensions



Technical Specification

EN124:2015 Class D400
DR60 600mm Diameter
Vehicular Composite Access Cover

Cover Specification

Load Rating:	EN124:2015 Class D400
Clear Opening:	600mm Diameter (23 ⁵ / ₈ ")
External Dimensions:	662mm Diameter (26") 132mm Depth (5 ³ / ₁₆ ")
Skid Resistance (wet polishes)	PSRV 60
Weight:	28kg (61.6lb) Combined weight with frame 41kg (90.4lb)
Lifting points:	Single key housing (also available with pry points)
Tread depth:	Tread depth complies with EN124:2015
Tread type:	Embedded aggregate – uni-directional
Markings:	Week, year and location of manufacture on the underside of cover. Cover class and weight on the top surface.
Corrosion/Chemical resistance:	All component parts are resistant to chemical attack, diesel, petrol, salt and water or a combination of the above over the lifespan of the cover. Surface discolouration is acceptable in service.
Combustion properties:	All component parts do not support combustion. Products of combustion do not contain harmful chemicals (e.g. bromides)
Sealed:	Yes (optional - can be retro-fitted)
Carbon footprint:	Low
Material:	Advanced fibre glass composite
Client logo:	Can be provided on top surface
Security Features:	Lock and security plug (lock cannot be left open on replacement of cover)

Frame Specification

Load Rating:	EN124:2015 Class D400
Clear Opening:	600mm Diameter (23 ⁵ / ₈ ")
Weight:	13kg (28.6lb)
External Dimensions:	800mm Diameter (31 ¹ / ₂ ") 150mm Depth (5 ⁷ / ₈ ")
Material:	Advanced fibre glass composite
Installation Details:	Provided in full as a separate document

Round Vehicular Composite Access Cover



Frame

Underside detail

814mm (32")

132mm (5¹/₁₆")

150mm (5⁷/₈")

Ø 760mm (30") clear opening

965mm (38")

150mm (5⁷/₈")

100mm (3¹⁵/₁₆")

9.5mm (3/8")

Ø 760mm (30") clear opening

872.5mm (34¹/₈") max cover width

1022.5mm (40¹/₄") max frame width

10

The frame is to be installed to the appropriate standard/specification for that particular installation.
For reference purposes only. This drawing is not a specification.

The frame is to be installed to the appropriate standard/specification for that particular installation.
For reference purposes only. This drawing is not a specification.



DR76 760mm Diameter

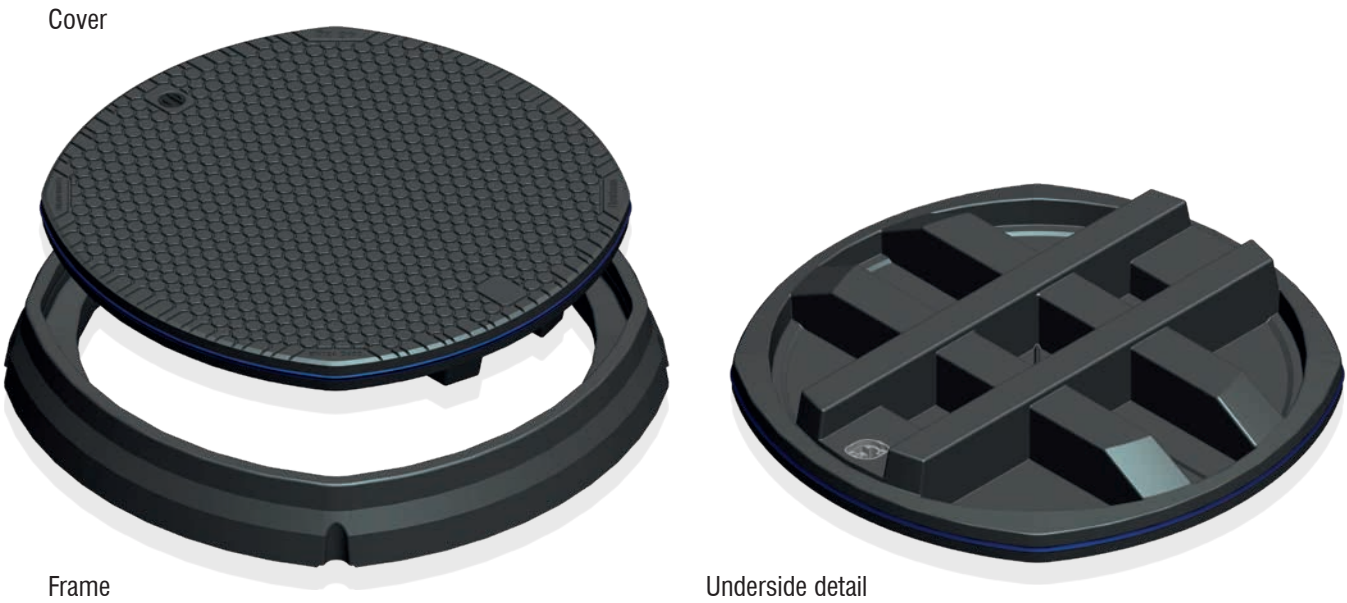
Vehicular Composite Access Cover

Load Rating:	EN124:2015 Class D400
Clear Opening:	760mm Diameter (30")
External Dimensions:	814mm Diameter (32") 132mm Depth (5 ³ / ₆ ")
Skid Resistance (wet polishes)	PSRV 60
Weight:	36kg (79.3lb) Combined weight with frame 52kg (114.6lb)
Lifting points:	Single key housing (also available with pry points)
Tread depth:	Tread depth complies with EN124:2015
Tread type:	Embedded aggregate – uni-directional
Markings:	Week, year and location of manufacture on the underside of cover. Cover class and weight on the top surface.
Corrosion/Chemical resistance:	All component parts are resistant to chemical attack, diesel, petrol, salt and water or a combination of the above over the lifespan of the cover. Surface discolouration is acceptable in service.
Combustion properties:	All component parts do not support combustion. Products of combustion do not contain harmful chemicals (e.g. bromides)
Sealed:	Yes (optional - can be retro-fitted)
Carbon footprint:	Low
Material:	Advanced fibre glass composite
Client logo:	Can be provided on top surface
Security Features:	Lock and security plug (lock cannot be left open on replacement of cover)

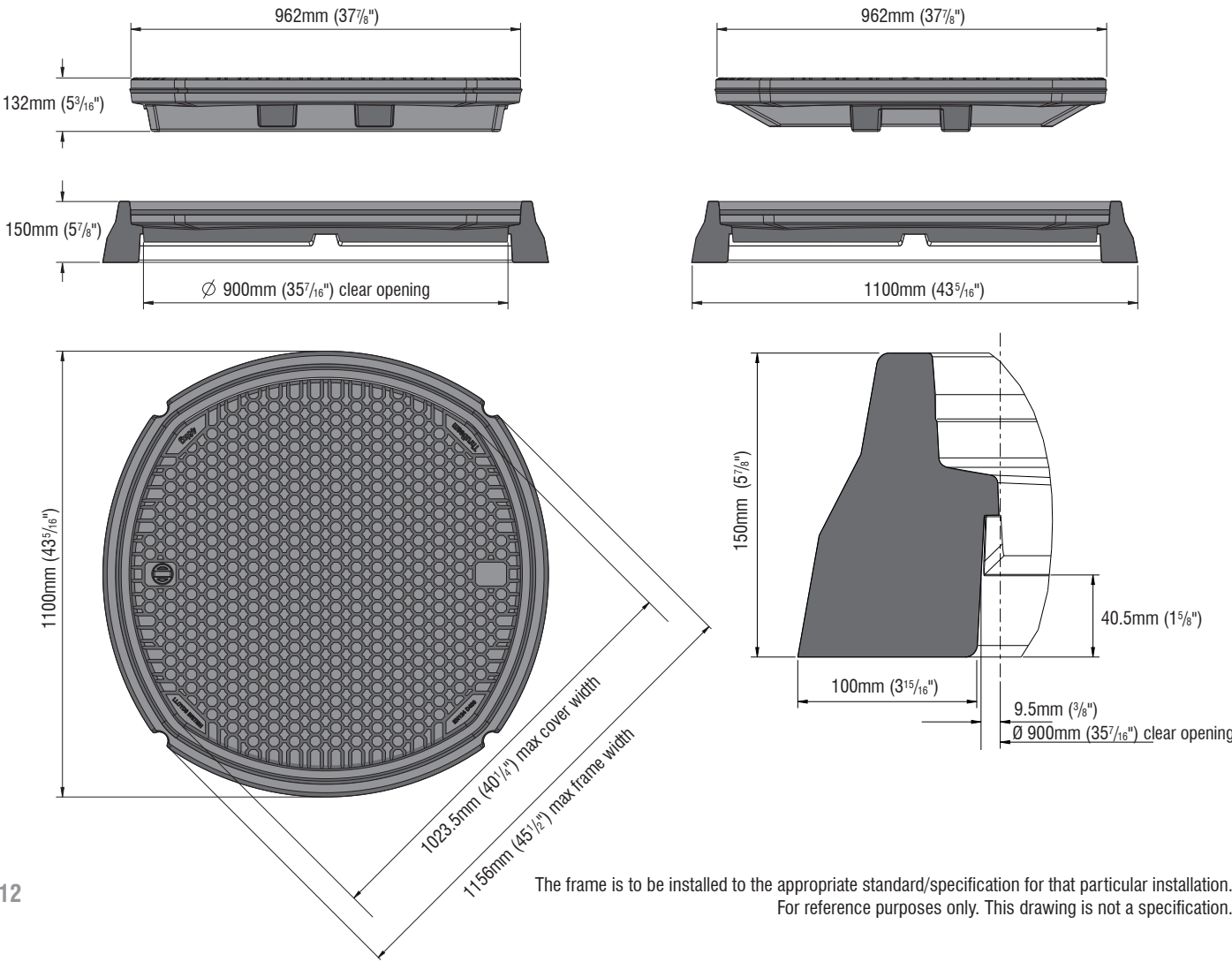
Load Rating:	EN124:2015 Class D400
Clear Opening:	760mm Diameter (30")
Weight:	16kg (35.3lb)
External Dimensions:	965mm Diameter (38") 150mm Depth (57/8")
Material:	Advanced fibre glass composite
Installation Details:	Provided in full as a separate document

Designs and specifications are subject to alteration, so that continuous improvement can be undertaken.

DR90 900mm - Solid
Round Vehicular Composite Access Cover



Dimensions



Technical Specification

EN124:2015 Class D400
DR90 900mm Diameter
Vehicular Composite Access Cover

Cover Specification

Load Rating:	EN124:2015 Class D400
Clear Opening:	900mm Diameter (35 ⁷ / ₁₆ ")
External Dimensions:	962mm Diameter (37 ⁷ / ₁₆ ") 132mm Depth (5 ³ / ₁₆ ")
Skid Resistance (wet polishes)	PSRV 60
Weight:	46kg (101.4lb) Combined weight with frame 61kg (134.5lb)
Lifting points:	Single key housing (also available with pry points)
Tread depth:	Tread depth complies with EN124:2015
Tread type:	Embedded aggregate – uni-directional
Markings:	Week, year and location of manufacture on the underside of cover. Cover class and weight on the top surface.
Corrosion/Chemical resistance:	All component parts are resistant to chemical attack, diesel, petrol, salt and water or a combination of the above over the lifespan of the cover. Surface discolouration is acceptable in service.
Combustion properties:	All component parts do not support combustion. Products of combustion do not contain harmful chemicals (e.g. bromides)
Sealed:	Yes (optional - can be retro-fitted)
Carbon footprint:	Low
Material:	Advanced fibre glass composite
Client logo:	Can be provided on top surface
Security Features:	Lock and security plug (lock cannot be left open on replacement of cover)

Frame Specification

Load Rating:	EN124:2015 Class D400
Clear Opening:	900mm Diameter (35 ⁷ / ₁₆ ")
Weight:	15kg (33.1lb)
External Dimensions:	1100mm Diameter (43 ⁵ / ₁₆ ") 150mm Depth (5 ⁷ / ₈ ")
Material:	Advanced fibre glass composite
Installation Details:	Provided in full as a separate document

The Benefits of a Structural Science composite cover over traditional covers

High structural performance

Meets European EN124 D400 standards.

Extended working life

Will not break or spin out in normal working conditions. The torsional resistant frames eliminate many of the usual causes of wear with traditional covers.

Permanent anti-slip - vehicle, motorbike, cycle and pedestrian friendly

Exceeds 0.60 co-efficient of friction even when wet and will retain this anti-slip value throughout its working life unlike conventional metal/GRP composite covers.

Secure and lockable

Can be supplied with or without a lock.
Cover cannot be left unlocked on replacement.
A high security key option is also available.

Injury free removal

Single person removal and replacement without the risk of back injury utilising ergonomically designed lifting tool. Can be supplied with a seal breaker for the watertight version.

Reduced maintenance programmes

Longevity, ease of moving and superior performance reduces maintenance programs. Fitting a ThruBeam® cover is the best 'whole life' choice.

Sealing - optional

100% watertight/sand tight with a unique self cleaning edge seal.

No residual value

Reduced risk of theft.

Transparent to radio waves

Negates the lifting of covers and helps promote better signals being transmitted thus improving asset management.

Non-corrosive

Will not corrode when in contact with other materials.
Unaffected by fuels, sand, salt and all chemicals met in road environments.

Electrically non-conductive or conductive

Will not conduct electricity, so stray voltage problems are negated.
Can be made conductive if required.

Client design service

SSC project managed bespoke design services will use our patented ThruBeam® technology to design alternative size and shape solutions to meet customer requirements.

For further information relating to our full product range please go to www.thrubeam.co.uk and download the appropriate pdf file.



Structural Science Composites Ltd

8 James Freel Court, James Freel Close, Barrow In Furness, UK, LA14 2NG
T: +44 (0)1229 814340 E: covers@structuralscience.net W: www.thrubeam.co.uk