

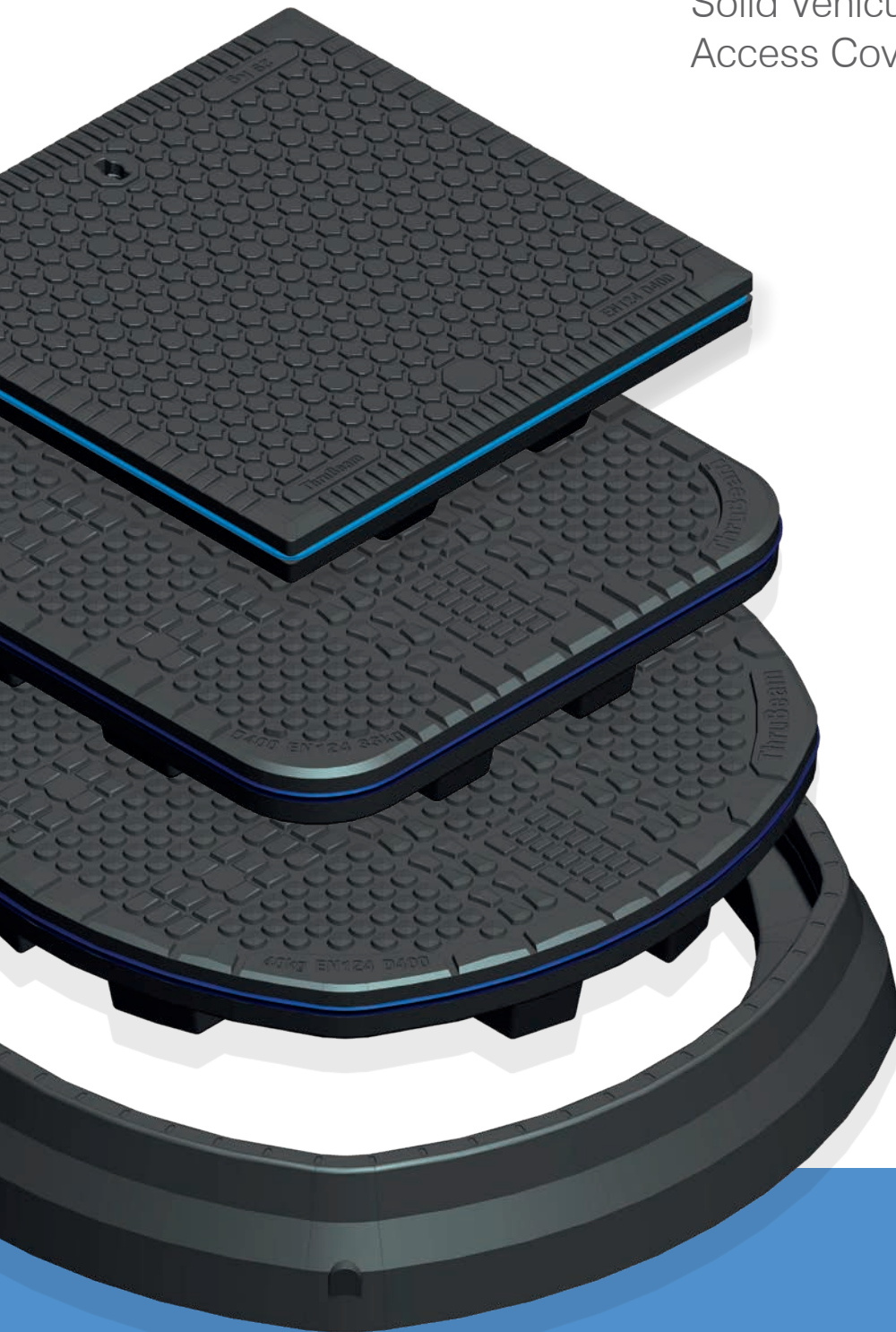
The appliance of composite science to underground access covering

# ThruBeam<sup>®</sup>

C O V E R S

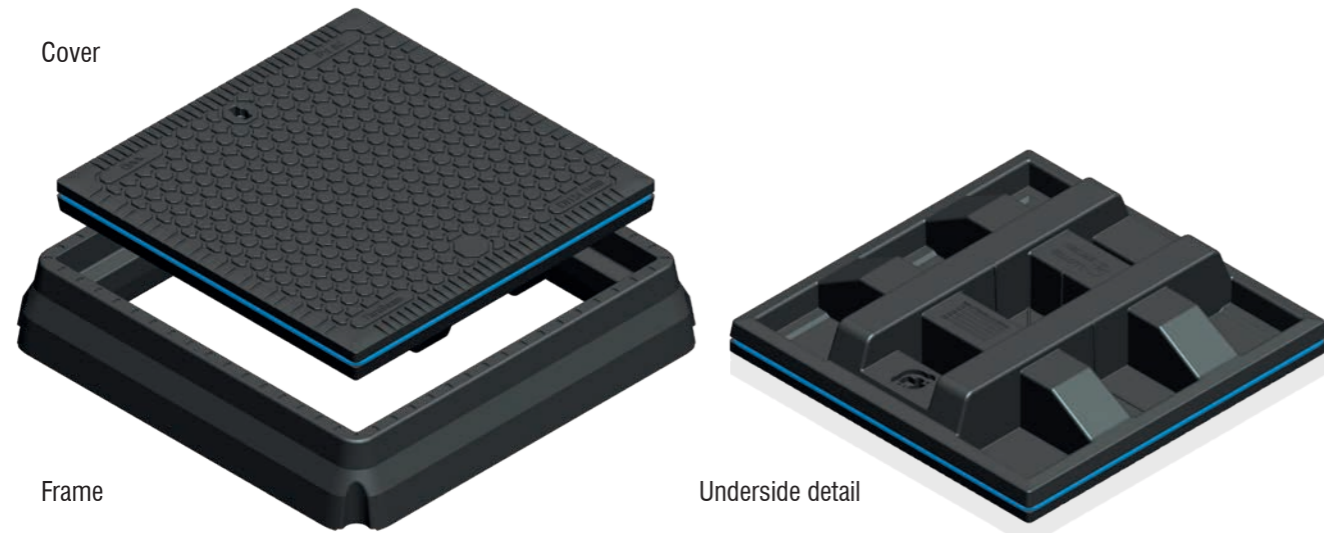
D400 Range

**DS6, DM6, DR60, DR76 & DR90**  
Square, Rectangular and Round  
Solid Vehicular Composite  
Access Covers

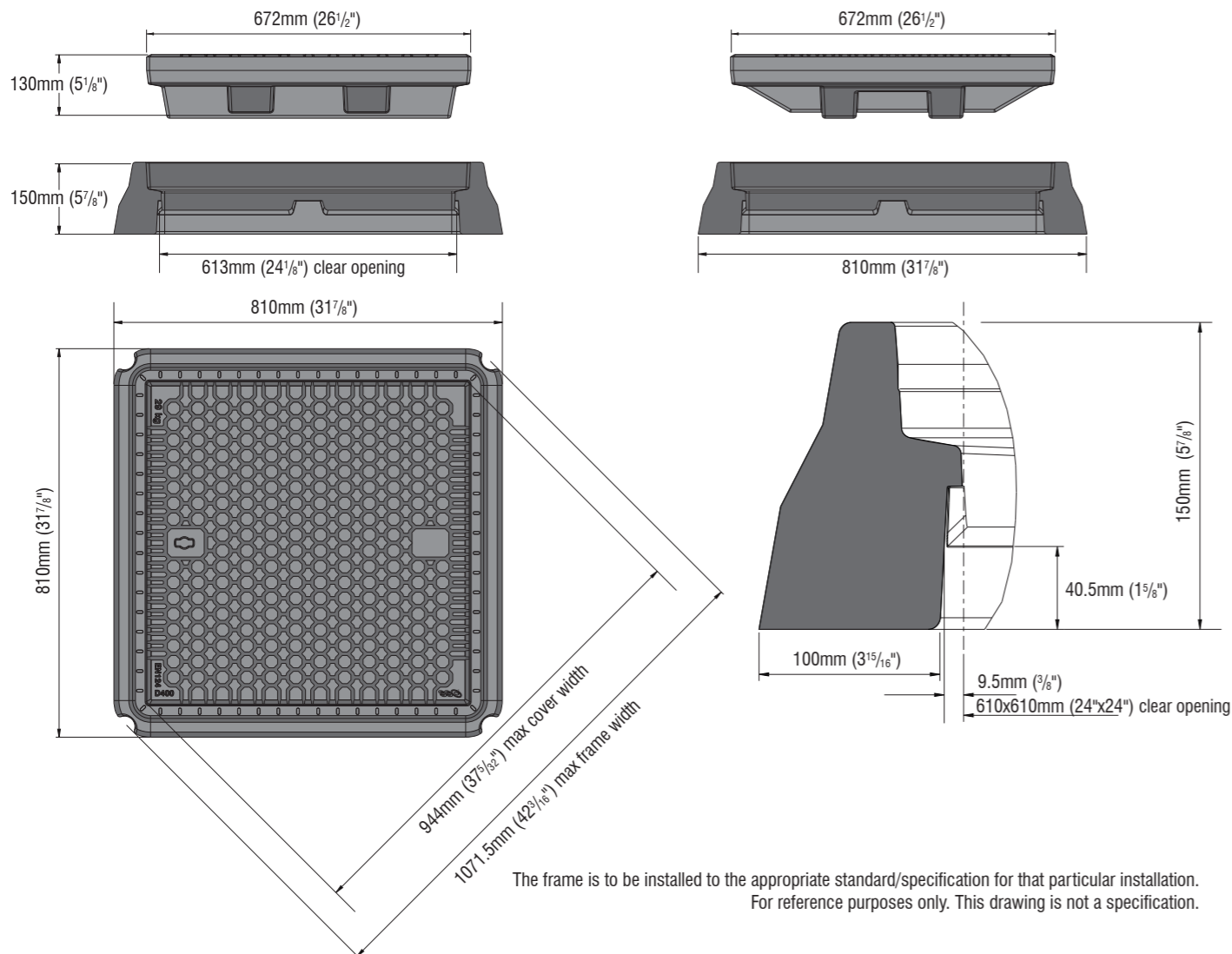


## DS6 600x600mm - Solid

### Square Vehicular Composite Access Cover



## Dimensions



The frame is to be installed to the appropriate standard/specification for that particular installation. For reference purposes only. This drawing is not a specification.

**ThruBeam**  
COVERS

## Technical Specification

EN124:2015 Class D400

**DS6 600x600mm Square**

Vehicular Composite Access Cover

### Cover Specification

Load Rating:	EN124:2015 Class D400
Clear Opening:	610 x 610mm (23" x 24")
External Dimensions:	672 x 672 x 132mm (26 1/2" x 26 1/2" x 5 1/4")
Skid Resistance (wet polishes)	PSRV 60
Weight:	29kg (63.8lb) Combined weight with frame 44kg (96.8lb)
Lifting points:	Single key housing
Tread depth:	Tread depth complies with EN124:2015
Tread type:	Embedded aggregate – uni-directional
Markings:	Week, year and location of manufacture on the underside of cover. Cover class and weight on the top surface.
Corrosion/Chemical resistance:	All component parts are resistant to chemical attack, diesel, petrol, salt and water or a combination of the above over the lifespan of the cover. Surface discolouration is acceptable in service.
Combustion properties:	All component parts do not support combustion. Products of combustion do not contain harmful chemicals (e.g. bromides)
Sealed:	Yes (optional - can be retro-fitted)
Carbon footprint:	Low
Material:	Advanced fibre glass composite
Client logo:	Can be provided on top surface
Security Features:	Lock and security plug (lock cannot be left open on replacement of cover)

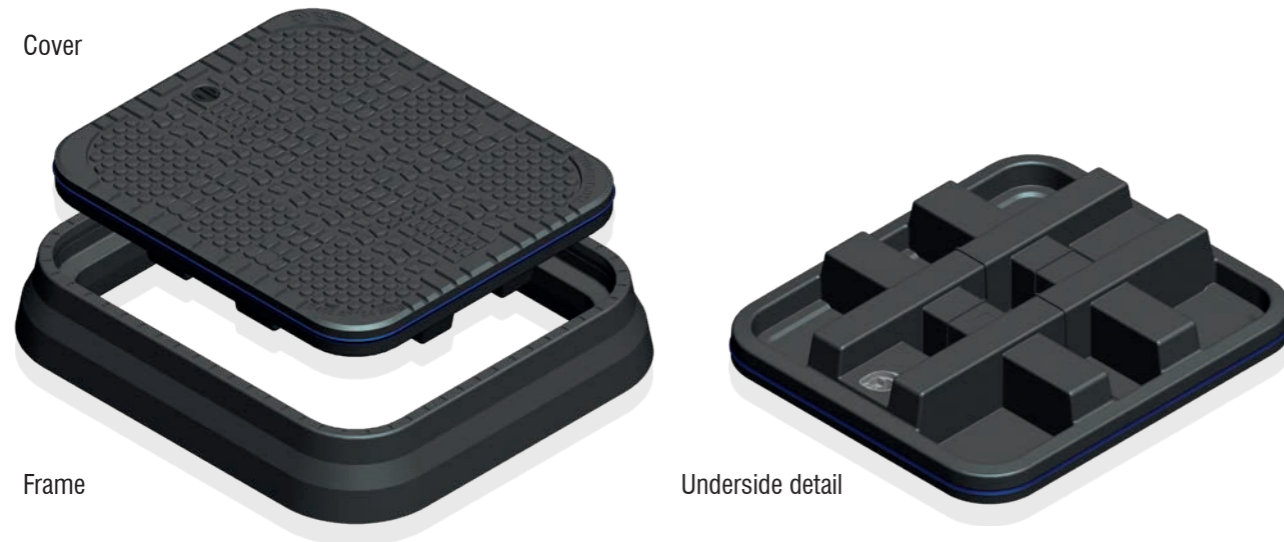
### Frame Specification

Load Rating:	EN124:2015 Class D400
Clear Opening:	610 x 610mm (23" x 24")
Weight:	15kg (33lb)
External Dimensions:	810 x 810 x 150mm (31 7/8" x 31 7/8" x 5 7/8")
Material:	Advanced fibre glass composite
Installation Details:	Provided in full as a separate document

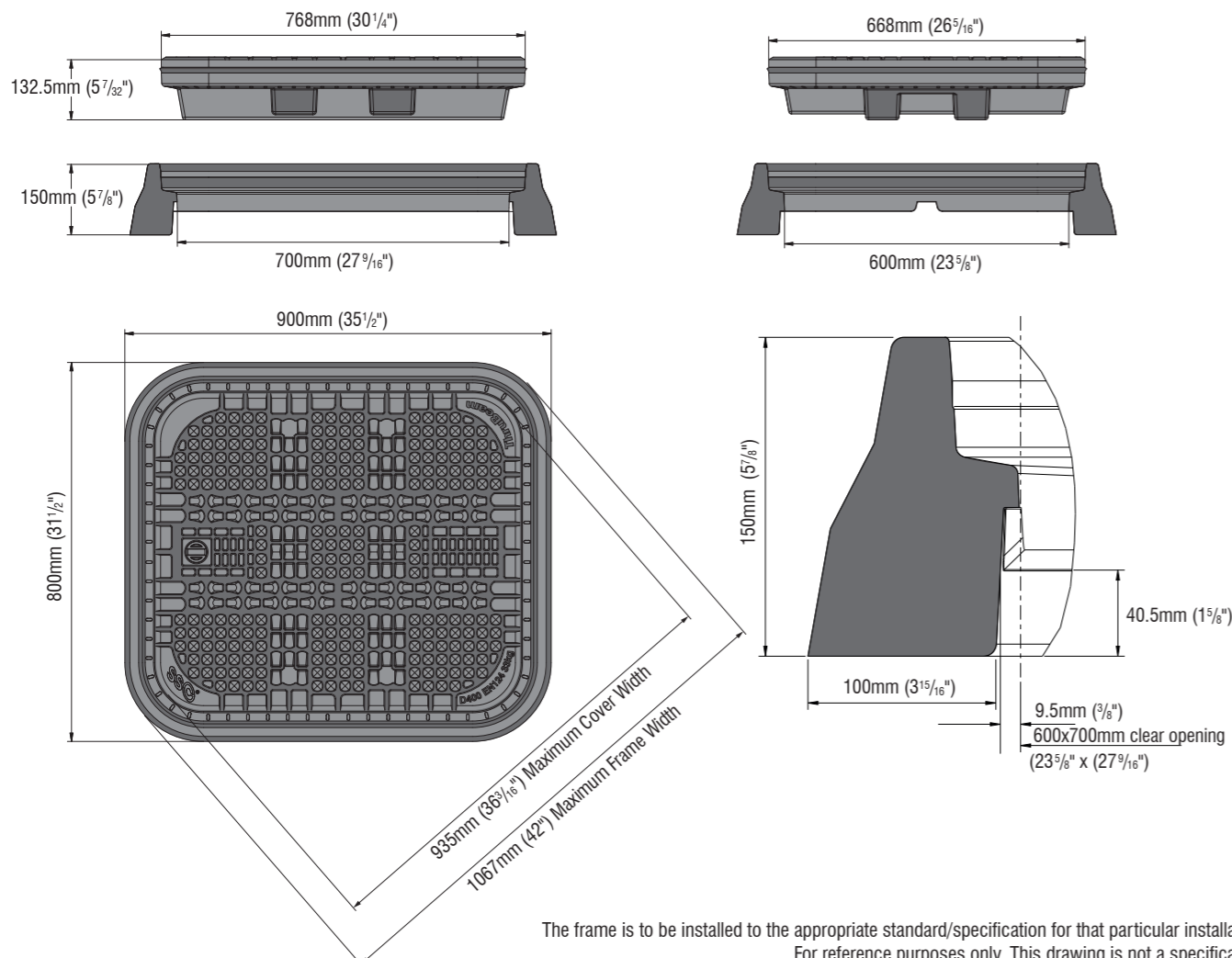
Designs and specifications are subject to alteration, so that continuous improvement can be undertaken.

## DM6 600x700mm - Solid

### Rectangular Vehicular Composite Access Cover



## Dimensions



The frame is to be installed to the appropriate standard/specification for that particular installation. For reference purposes only. This drawing is not a specification.

**ThruBeam**  
COVERS

## Technical Specification

EN124:2015 Class D400

### DM6 600x700mm Rectangular Vehicular Composite Access Cover

#### Cover Specification

Load Rating:	EN124:2015 Class D400
Clear Opening:	600 x 700mm (23 <sup>5</sup> / <sub>8</sub> " x 27 <sup>9</sup> / <sub>16</sub> " )
External Dimensions:	668 x 768mm x 127mm (26 <sup>5</sup> / <sub>16</sub> " x 30 <sup>1</sup> / <sub>4</sub> " x 5")
Skid Resistance (wet polishes)	PSRV 60
Weight:	33kg (72.75lb) Combined weight with frame 48.5kg (106.955lb)
Lifting points:	Single key housing
Tread depth:	Tread depth complies with EN124:2015
Tread type:	Embedded aggregate – uni-directional
Markings:	Week, year and location of manufacture on the underside of cover. Cover class and weight on the top surface.
Corrosion/Chemical resistance:	All component parts are resistant to chemical attack, diesel, petrol, salt and water or a combination of the above over the lifespan of the cover. Surface discolouration is acceptable in service.
Combustion properties:	All component parts do not support combustion. Products of combustion do not contain harmful chemicals (e.g. bromides)
Sealed:	Yes (optional - can be retro-fitted)
Carbon footprint:	Low
Material:	Advanced fibre glass composite
Client logo:	Can be provided on top surface
Security Features:	Lock and security plug (lock cannot be left open on replacement of cover)

#### Frame Specification

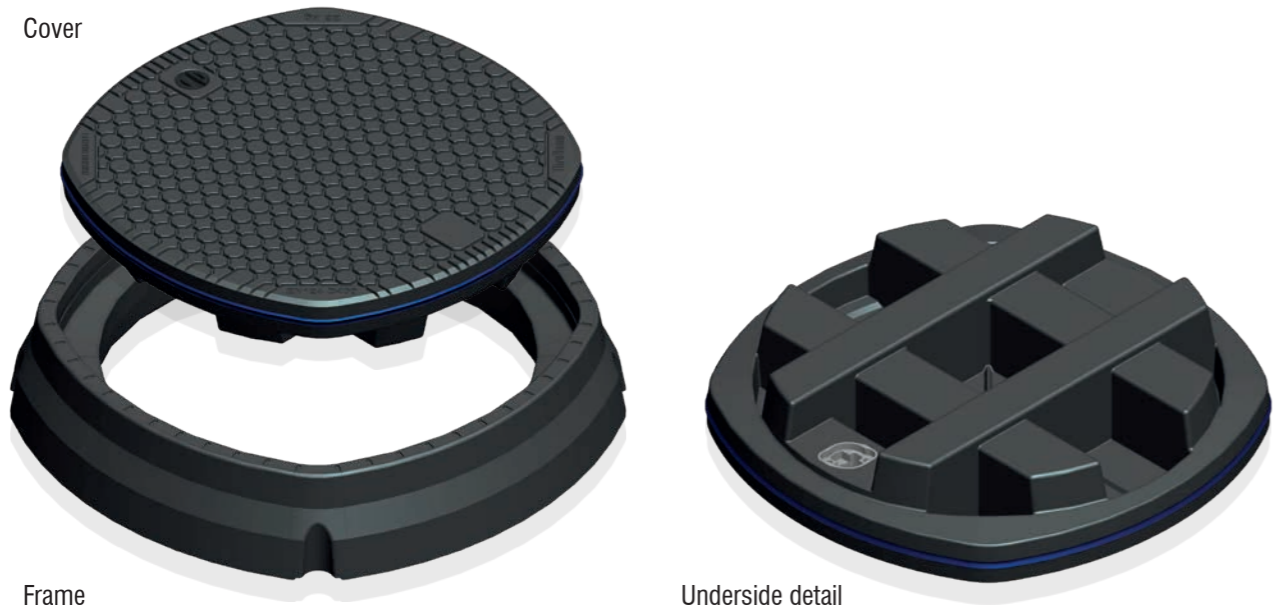
Load Rating:	EN124:2015 Class D400
Clear Opening:	DM6 - 600 x 700mm (23 <sup>5</sup> / <sub>8</sub> " x 27 <sup>9</sup> / <sub>16</sub> " )
Weight:	DM6 - 15.5kg (34.2lb)
External Dimensions:	DM6 - 800 x 900mm x 150mm (31 <sup>1</sup> / <sub>2</sub> " x 35 <sup>1</sup> / <sub>2</sub> " x 5 <sup>7</sup> / <sub>8</sub> " )
Material:	Advanced fibre glass composite
Installation Details:	Provided in full as a separate document

Designs and specifications are subject to alteration, so that continuous improvement can be undertaken.

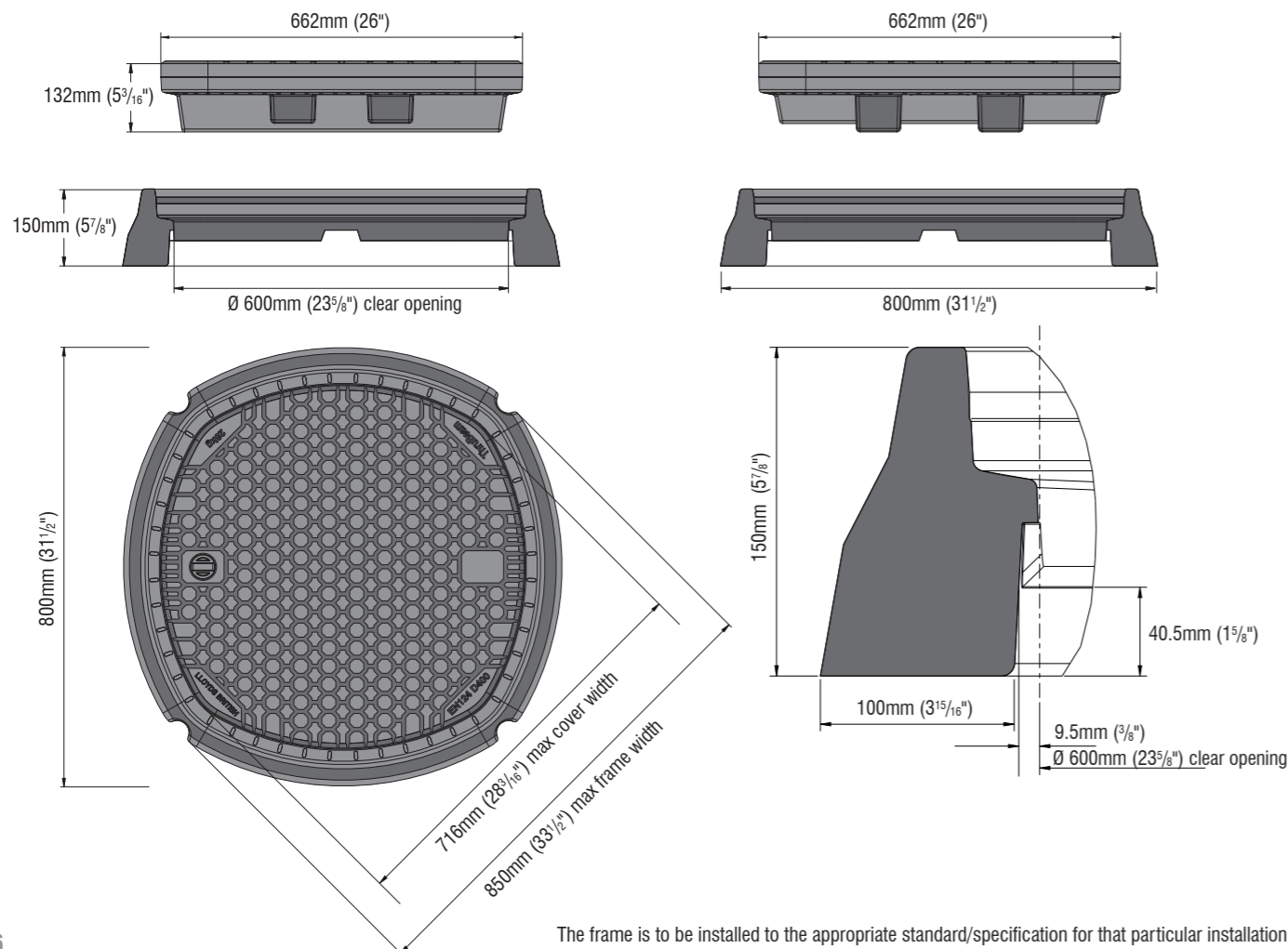


## DR60 600mm - Solid

### Round Vehicular Composite Access Cover



## Dimensions



The frame is to be installed to the appropriate standard/specification for that particular installation. For reference purposes only. This drawing is not a specification.

**ThruBeam**  
COVERS

## Technical Specification

EN124:2015 Class D400

**DR60 600mm Diameter**

Vehicular Composite Access Cover

### Cover Specification

Load Rating:	EN124:2015 Class D400
Clear Opening:	600mm Diameter (23 <sup>5</sup> / <sub>8</sub> ")
External Dimensions:	662mm Diameter (26") 132mm Depth (5 <sup>3</sup> / <sub>16</sub> ")
Skid Resistance (wet polishes)	PSRV 60
Weight:	28kg (61.6lb) Combined weight with frame 41kg (90.4lb)
Lifting points:	Single key housing (also available with pry points)
Tread depth:	Tread depth complies with EN124:2015
Tread type:	Embedded aggregate – uni-directional
Markings:	Week, year and location of manufacture on the underside of cover. Cover class and weight on the top surface.
Corrosion/Chemical resistance:	All component parts are resistant to chemical attack, diesel, petrol, salt and water or a combination of the above over the lifespan of the cover. Surface discolouration is acceptable in service.
Combustion properties:	All component parts do not support combustion. Products of combustion do not contain harmful chemicals (e.g. bromides)
Sealed:	Yes (optional - can be retro-fitted)
Carbon footprint:	Low
Material:	Advanced fibre glass composite
Client logo:	Can be provided on top surface
Security Features:	Lock and security plug (lock cannot be left open on replacement of cover)

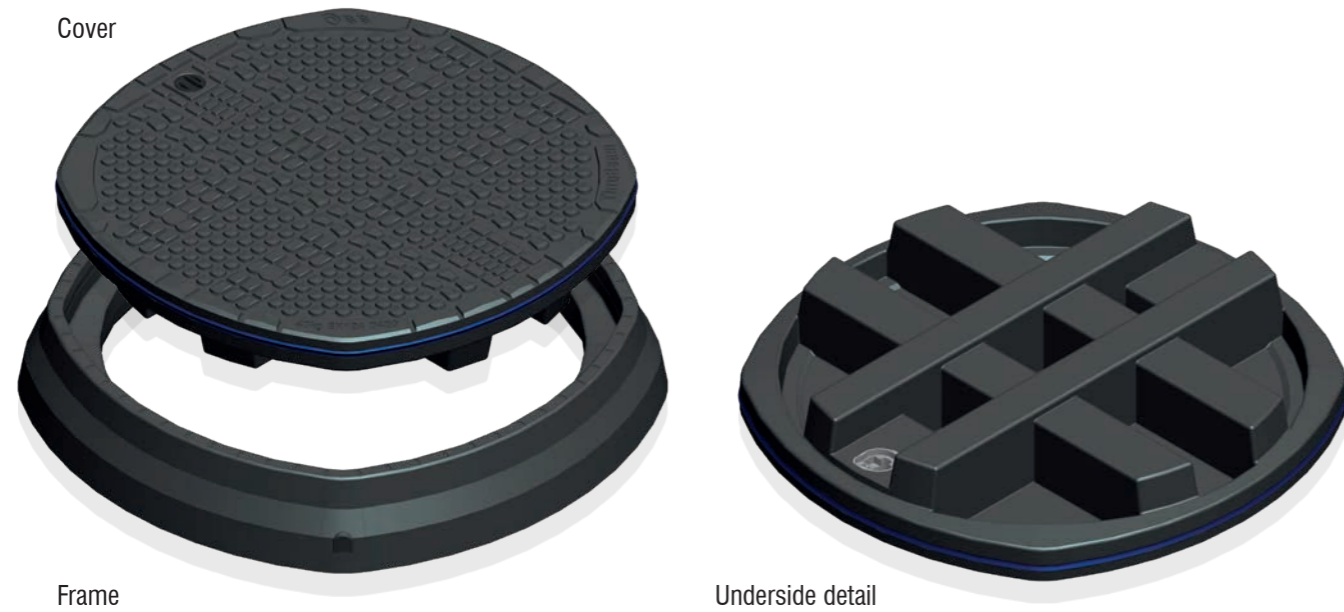
### Frame Specification

Load Rating:	EN124:2015 Class D400
Clear Opening:	600mm Diameter (23 <sup>5</sup> / <sub>8</sub> ")
Weight:	13kg (28.6lb)
External Dimensions:	800mm Diameter (31 <sup>1</sup> / <sub>2</sub> ") 150mm Depth (5 <sup>7</sup> / <sub>8</sub> ")
Material:	Advanced fibre glass composite
Installation Details:	Provided in full as a separate document

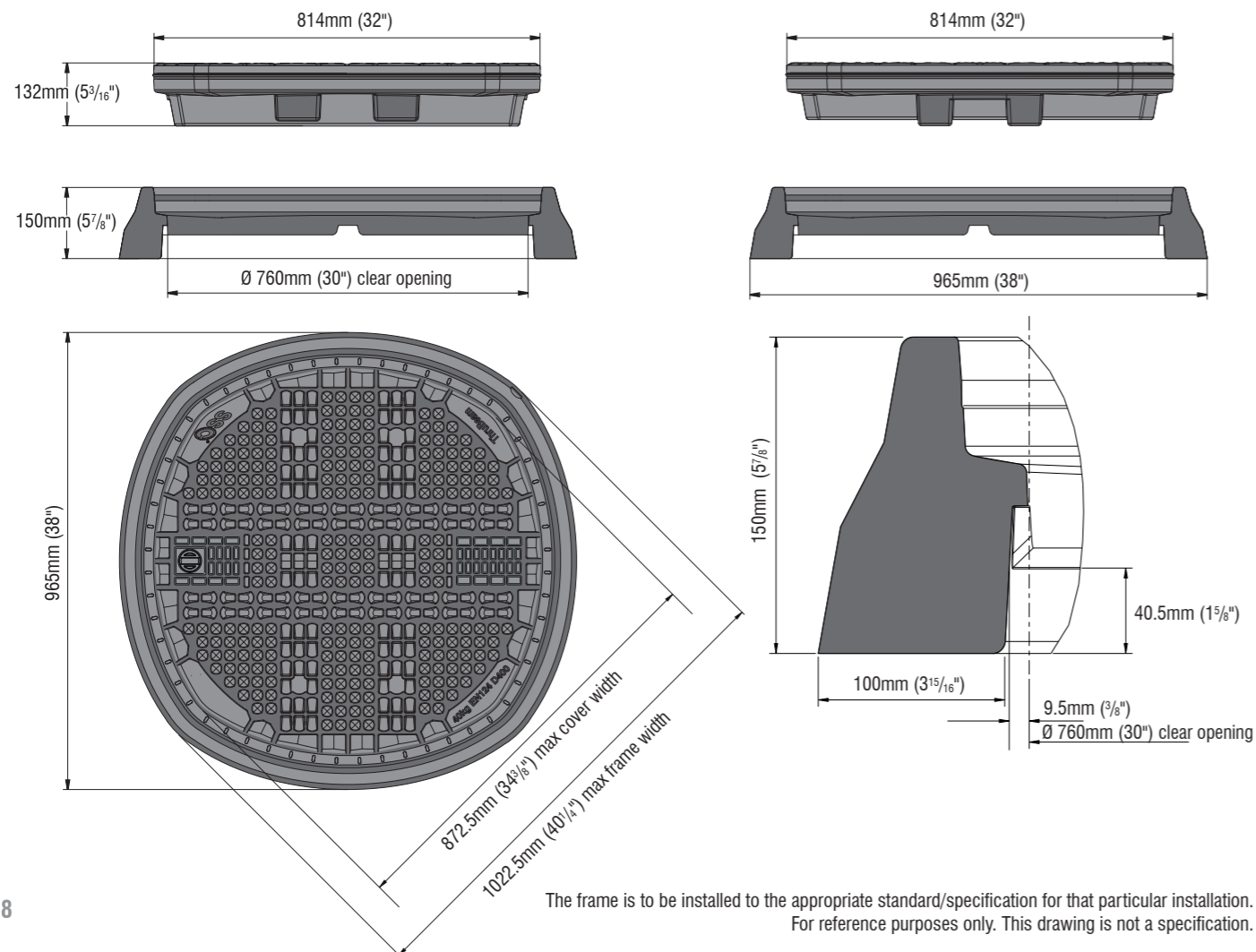
Designs and specifications are subject to alteration, so that continuous improvement can be undertaken.

## DR76 760mm - Solid

### Round Vehicular Composite Access Cover



## Dimensions



The frame is to be installed to the appropriate standard/specification for that particular installation. For reference purposes only. This drawing is not a specification.

**ThruBeam**  
COVERS

## Technical Specification

EN124:2015 Class D400

**DR76 760mm Diameter**

Vehicular Composite Access Cover

### Cover Specification

Load Rating:	EN124:2015 Class D400
Clear Opening:	760mm Diameter (30")
External Dimensions:	814mm Diameter (32") 132mm Depth (5 <sup>3</sup> / <sub>16</sub> ")
Skid Resistance (wet polishes)	PSRV 60
Weight:	36kg (79.3lb) Combined weight with frame 52kg (114.6lb)
Lifting points:	Single key housing (also available with pry points)
Tread depth:	Tread depth complies with EN124:2015
Tread type:	Embedded aggregate – uni-directional
Markings:	Week, year and location of manufacture on the underside of cover. Cover class and weight on the top surface.
Corrosion/Chemical resistance:	All component parts are resistant to chemical attack, diesel, petrol, salt and water or a combination of the above over the lifespan of the cover. Surface discolouration is acceptable in service.
Combustion properties:	All component parts do not support combustion. Products of combustion do not contain harmful chemicals (e.g. bromides)
Sealed:	Yes (optional - can be retro-fitted)
Carbon footprint:	Low
Material:	Advanced fibre glass composite
Client logo:	Can be provided on top surface
Security Features:	Lock and security plug (lock cannot be left open on replacement of cover)

### Frame Specification

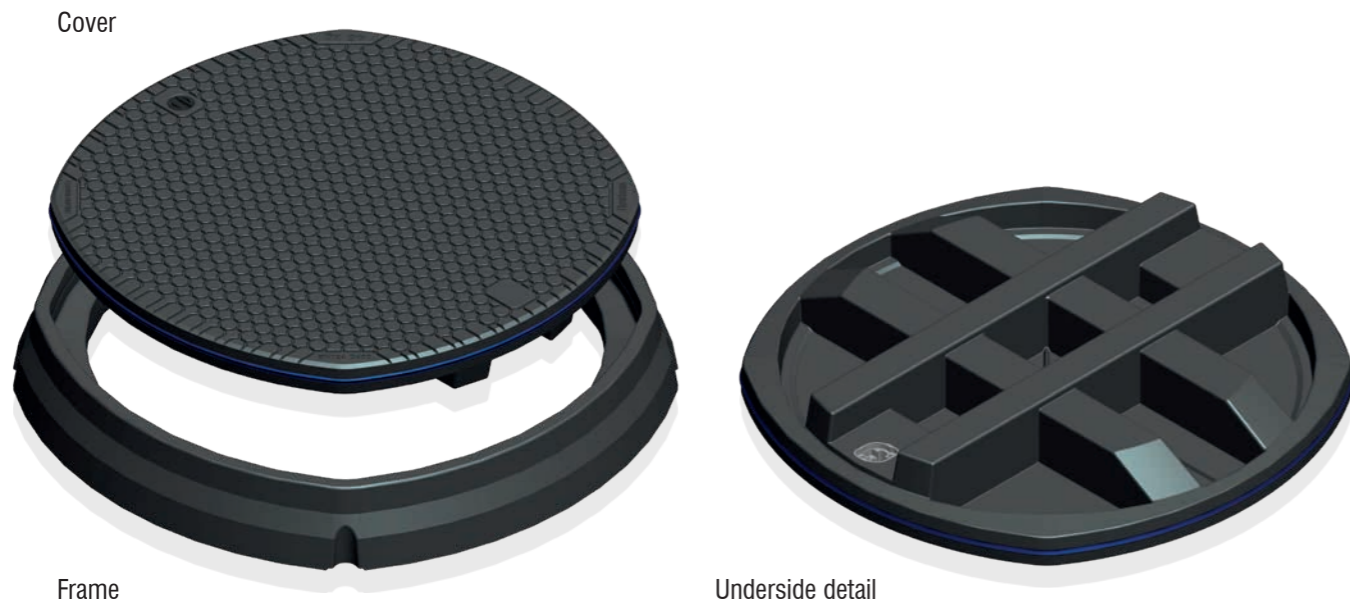
Load Rating:	EN124:2015 Class D400
Clear Opening:	760mm Diameter (30")
Weight:	16kg (35.3lb)
External Dimensions:	965mm Diameter (38") 150mm Depth (5 <sup>7</sup> / <sub>8</sub> ")
Material:	Advanced fibre glass composite
Installation Details:	Provided in full as a separate document

Designs and specifications are subject to alteration, so that continuous improvement can be undertaken.

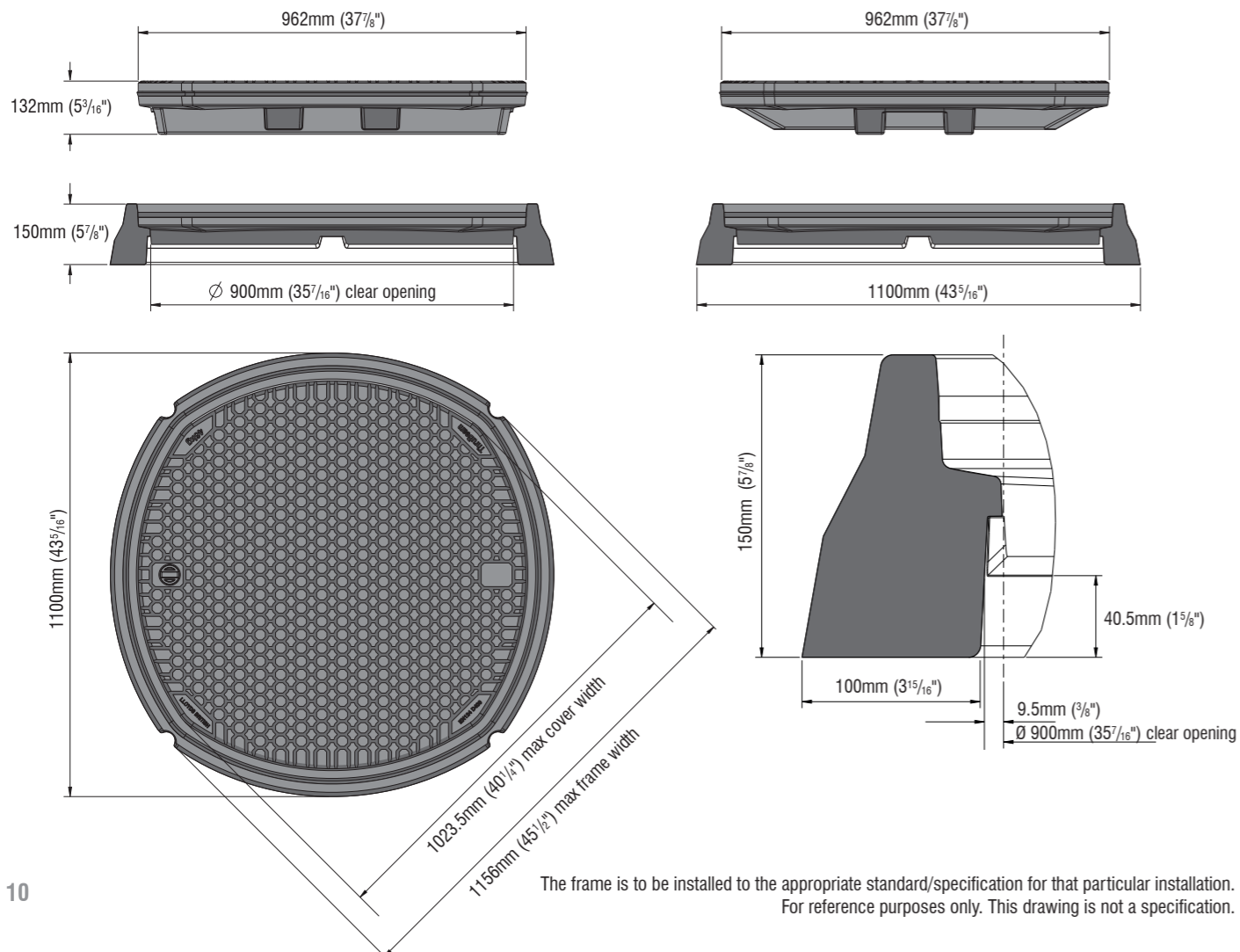


## DR90 900mm - Solid

### Round Vehicular Composite Access Cover



## Dimensions



The frame is to be installed to the appropriate standard/specification for that particular installation. For reference purposes only. This drawing is not a specification.

**ThruBeam**  
COVERS

## Technical Specification

EN124:2015 Class D400

**DR90 900mm Diameter**

Vehicular Composite Access Cover

### Cover Specification

Load Rating:	EN124:2015 Class D400
Clear Opening:	900mm Diameter (35 <sup>7</sup> / <sub>16</sub> "
External Dimensions:	962mm Diameter (37 <sup>7</sup> / <sub>16</sub> ") 132mm Depth (5 <sup>3</sup> / <sub>16</sub> ")
Skid Resistance (wet polishes)	PSRV 60
Weight:	46kg (101.4lb) Combined weight with frame 61kg (134.5lb)
Lifting points:	Single key housing (also available with pry points)
Tread depth:	Tread depth complies with EN124:2015
Tread type:	Embedded aggregate – uni-directional
Markings:	Week, year and location of manufacture on the underside of cover. Cover class and weight on the top surface.
Corrosion/Chemical resistance:	All component parts are resistant to chemical attack, diesel, petrol, salt and water or a combination of the above over the lifespan of the cover. Surface discolouration is acceptable in service.
Combustion properties:	All component parts do not support combustion. Products of combustion do not contain harmful chemicals (e.g. bromides)
Sealed:	Yes (optional - can be retro-fitted)
Carbon footprint:	Low
Material:	Advanced fibre glass composite
Client logo:	Can be provided on top surface
Security Features:	Lock and security plug (lock cannot be left open on replacement of cover)

### Frame Specification

Load Rating:	EN124:2015 Class D400
Clear Opening:	900mm Diameter (35 <sup>7</sup> / <sub>16</sub> "
Weight:	15kg (33.1lb)
External Dimensions:	1100mm Diameter (43 <sup>5</sup> / <sub>16</sub> ") 150mm Depth (5 <sup>7</sup> / <sub>8</sub> ")
Material:	Advanced fibre glass composite
Installation Details:	Provided in full as a separate document

Designs and specifications are subject to alteration, so that continuous improvement can be undertaken.

## The Benefits of a Structural Science composite cover over traditional covers

### High structural performance

Meets European EN124 D400 standards.

### Extended working life

Will not break or spin out in normal working conditions. The torsional resistant frames eliminate many of the usual causes of wear with traditional covers.

### Permanent anti-slip - vehicle, motorbike, cycle and pedestrian friendly

Exceeds 0.60 co-efficient of friction even when wet and will retain this anti-slip value throughout its working life unlike conventional metal/GRP composite covers.

### Secure and lockable

Can be supplied with or without a lock.  
Cover cannot be left unlocked on replacement.  
A high security key option is also available.

### Injury free removal

Single person removal and replacement without the risk of back injury utilising ergonomically designed lifting tool. Can be supplied with a seal breaker for the watertight version.

### Reduced maintenance programmes

Longevity, ease of moving and superior performance reduces maintenance programs. Fitting a ThruBeam® cover is the best 'whole life' choice.

### Sealing - optional

100% watertight/sand tight with a unique self cleaning edge seal.

### No residual value

Reduced risk of theft.

### Transparent to radio waves

Negates the lifting of covers and helps promote better signals being transmitted thus improving asset management.

### Non-corrosive

Will not corrode when in contact with other materials.  
Unaffected by fuels, sand, salt and all chemicals met in road environments.

### Electrically non-conductive or conductive

Will not conduct electricity, so stray voltage problems are negated.  
Can be made conductive if required.

### Client design service

SSC project managed bespoke design services will use our patented ThruBeam® technology to design alternative size and shape solutions to meet customer requirements.

For further information relating to our full product range please go to [www.thrubeam.co.uk](http://www.thrubeam.co.uk) and download the appropriate pdf file.



#### Structural Science Composites Ltd

8 James Freel Court, James Freel Close, Barrow In Furness, UK, LA14 2NG  
T: +44 (0)1229 814340 E: [covers@structuralscience.net](mailto:covers@structuralscience.net) W: [www.thrubeam.co.uk](http://www.thrubeam.co.uk)